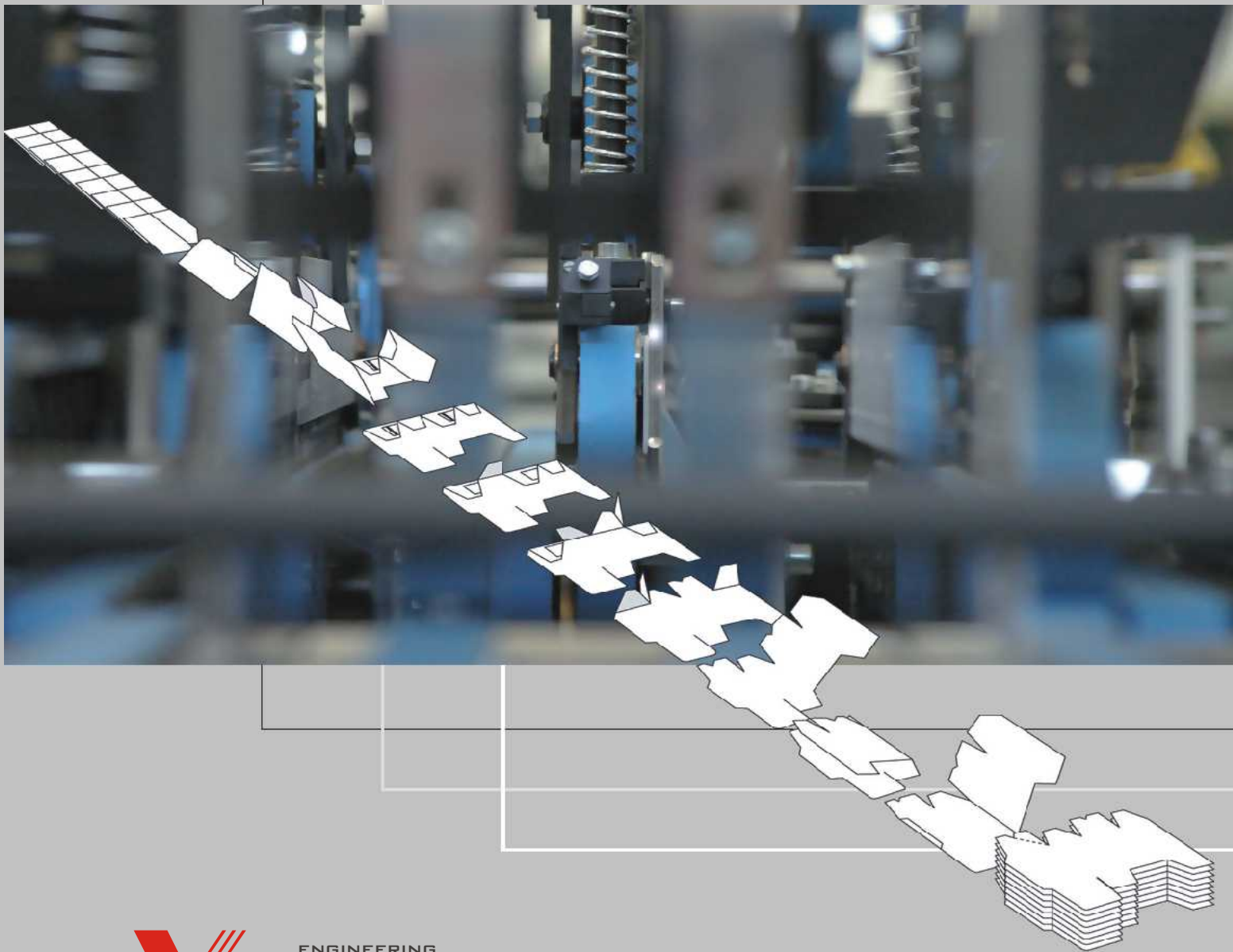

FOLDING and GLUING MACHINE

CORSO

FOR CARTON BOX INDUSTRY





DESCRIPTION

CORSO – modern and cost effective , compact size folder gluer specially small and micro boxes designed for short or medium runs in traditional offset or digital printings recommended.

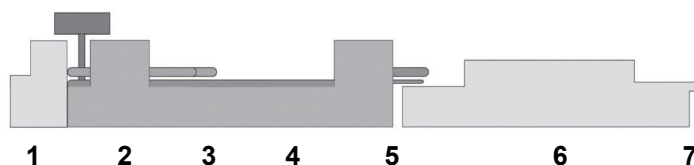
BASIC VERSION

CORSO is one version available which pocket folding device includes.

Such configuration enables basic jobs to convert :

- straight line boxes
 - double wall boxes
 - pocket folded envelopes , CD sleeves or other multimedia packages
-

CORSO - cross section :



1 Feeder

2 Prefolding section

3 Gluing section

4 Folding section

5 Transfer station

6 Compression module

7 Delivery section



TECHNICAL DATA

CONVERTIBLE STOCK

Folding box board	GSM	200 - 800
Microflute	TYPE	N - F - E
Corrugated board	TYPE	n.a.

DRIVE SYSTEM

Inching speed	m/min : ft/min	10 / 32,8
Operating speed *	m/min : ft/min	20-200 / 65-656
optional	m/min : ft/min	20-300 / 65-984

SPACE REQUIREMENT

Length	m : ft	7,30 / 23,95
k3 version	m : ft	n.a. / n.a.
k4 / k6 version	m : ft	n.a. / n.a.
Width	m : ft	0,85 / 2,79
Height	m : ft	1,48 / 4,86
Weight, approx.	t : US t	1,70 / 2,04

INSTALLATION

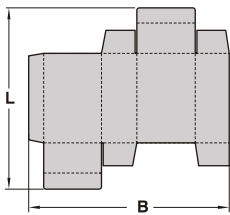
Voltage	V	400 N-PE / 208 3PH
Motor power	kW	6,00
Compressed air	bar : psi	6 / 87

MAJOR OPTIONS

- MANUAL or MOTORIZED setting system
- FRICTION or VACUUM feeder
- SQUARING device at transfer station
- MECHANICAL or PNEUMATIC compression station
- LOW or HIGH PRESSURE cold gluing system
- ADDITIONAL GLUE GUNS (1 - 16 pcs)
- COMPACT or TOP-GUARD glue controller
- CODE READING and/or GLUE TRACK CHECKING
- Failed boxes EJECTOR
- HOT-MELT or PUR gluing systems
- BRAILLE embossing device
- WINDOW PATCHING device
- GRINDING or PLASMA TREATMENT device
- Wide range of ATTACHMENT and TOOLS

MAIN JOBS DIMENSIONS

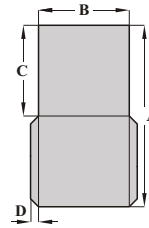
STRAIGHT LINE BOXES



B _{min}	75 mm / 2,95 in
B _{max}	450 mm / 17,72 in
L _{min}	70 mm / 2,76 in
L _{max}	490 mm / 19,29 in

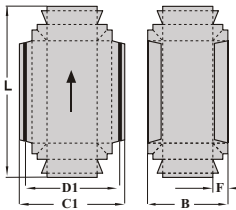
B_{min} = 45 mm / 1,77 in
S - VERSION or
with SMALL BOX ATTACHMENT

POCKET FOLD



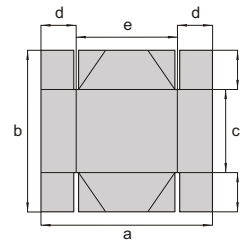
A _{min}	240 mm / 9,45 in
A _{max}	550 mm / 21,65 in
B _{min}	120 mm / 4,73 in
B _{max}	450 mm / 17,71 in
C _{min}	120 mm / 4,73 in
C _{max}	225 mm / 8,85 in
D _{min}	10 mm / 0,39 in
D _{max}	15 mm / 0,59 in

DOUBLE WALL BOXES



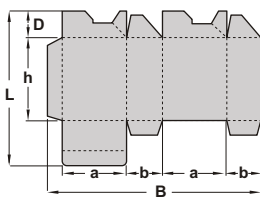
B _{min}	75 mm / 2,95 in
B _{max}	420 mm / 16,54 in
F _{min}	15 mm / 0,59 in
C1 _{max}	450 mm / 17,72 in
D1 _{max}	430 mm / 16,93 in
L _{min}	70 mm / 2,76 in
L _{max}	490 mm / 19,29 in

FOUR CORNER BOXES



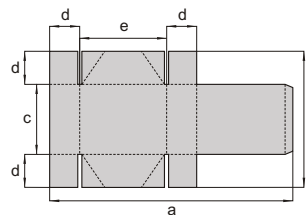
a _{min}	n.a. / n.a.
a _{max}	n.a. / n.a.
b _{min}	n.a. / n.a.
b _{max}	n.a. / n.a.
c _{min}	n.a. / n.a.
d _{min}	n.a. / n.a.
d _{max}	n.a. / n.a.
e _{min}	n.a. / n.a.

CRASHLOCK BOTTOM



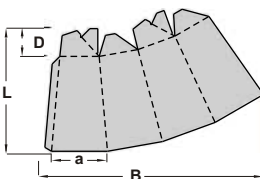
B _{min}	n.a. / n.a.
B _{max}	n.a. / n.a.
D _{max}	n.a. / n.a.
L _{max}	n.a. / n.a.
h _{min}	n.a. / n.a.
a _{min}	n.a. / n.a.
b _{min}	n.a. / n.a.

FOUR CORNER BOXES WITH LID



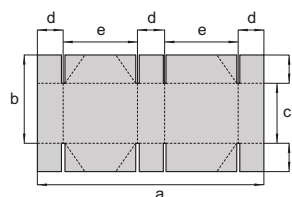
a _{max}	n.a. / n.a.
b _{max}	n.a. / n.a.
c _{min}	n.a. / n.a.
d _{min}	n.a. / n.a.
d _{max}	n.a. / n.a.
e _{min}	n.a. / n.a.

PYRAMID (CRASHLOCK BOTTOM)



L _{max}	n.a. / n.a.
D _{max}	n.a. / n.a.
a _{min}	n.a. / n.a.
B _{max}	n.a. / n.a.

SIX CORNER BOXES



a _{min}	n.a. / n.a.
a _{max}	n.a. / n.a.
b _{min}	n.a. / n.a.
b _{max}	n.a. / n.a.
c _{min}	n.a. / n.a.
d _{min}	n.a. / n.a.
d _{max}	n.a. / n.a.
e _{min}	n.a. / n.a.

SUPPLEMENTARY CONVERTING MACHINES



**DIGIPACK
MACHINES**



**AUTOMATIC TAPING
MACHINES**



**GOLD EMBOSING
ATTACHMENT**

Versor

www.versor.pl

YOUR LOCAL CONTACT :

POLAND :

85-794 BYDGOSZCZ , ul. Lawinowa 1E/31
PH. +48 61 861 70 30 , mailto : sales@versor.pl